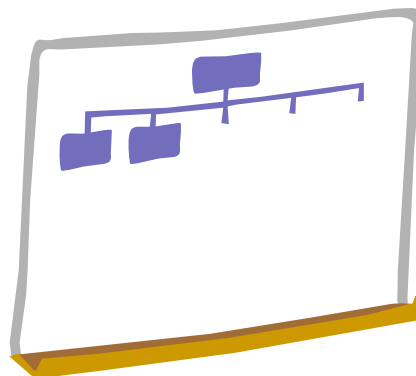


Implementing Gender commitments in the Global Compact on Refugees, and the Multistakeholder Pledge: Gender Equality and Protection from Gender-based Violence.

<https://globalcompactrefugees.org/>



Developed and produced by
Adjunct Professor Eileen Pittaway and Dr Linda Bartolomei,
with contributions from and Geraldine Doney and Emma Pittaway
Forced Migration Research Network
University of New South Wales, Sydney

Aim of the Training

This training will provide participants with a range of tools to assist in implementing the commitments made to Gender Equality, Refugee Participation and responses to Sexual and Gender Based Violence in the Global Compact on Refugees.

Objectives of the Training

The complete training program will provide participants with information regarding a number of key barriers to refugee participation and responses to SGBV identified through the research on which this kit is based. They will be introduced to a range of tools and exercises to enable them to identify, analyse and respond to:

1. Structural Barriers,
2. Gender Inequality,
3. Gender-based Social Barriers,
4. Using an Age Gender and Diversity approach,
5. Addressing Sexual and Gender Based Violence,
6. Harnessing Lived Experience,
7. Acknowledging the specific needs of Refugee Men and including them as partners in gender equality,
8. Meaningful Participation,
9. Effective Partnerships,
10. The Power of Privilege,
11. Moving from a Humanitarian to a Human Rights based community development approach,
12. Succession Planning,
13. Barriers to Legal Aspects of Collective working,
14. Using an Intersectional Approach to develop a Strategic Plan.

Outcomes:

Prerequisites for facilitators

There should ideally be at least two facilitators at all times. This will provide backup for continuity and ensures that the non-verbal signs of the group will be captured and addressed.

Materials needed to run the course

- 3 Depending on what is available, and whether there is a reliable source of electricity, or access to the internet, a projector, laptop, external speakers, or printed flip charts of the slides can be used.
- 3 If possible access to a generator or electrical equipment for some parts of the training, or battery operated data projector, if training is taking place in refugee camps.
- 3 Plain paper flip charts, marker pens.
- 3 Books and pens for participants.
- 3

Annexe 1

Background to the Methodologies used

Reciprocal Research,