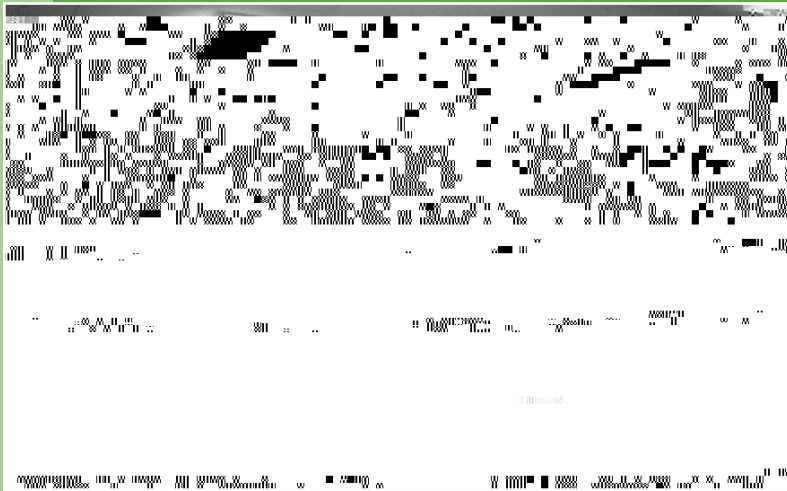




THE UNIVERSITY OF  
NEW SOUTH WALES



2001.

C

C

11

M

2032

@

2032

A

N

F

(02) 9398 6366

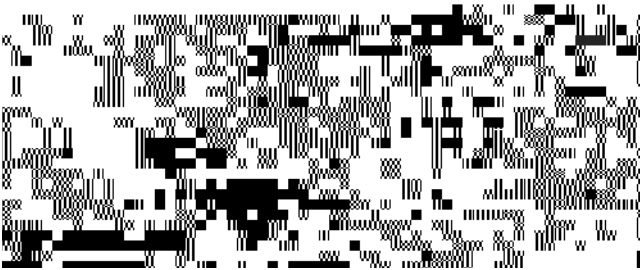
(02) 9399 6683

(02) 9314 6430

E

@

. . .



9 9

.....	2
.....	3
A & E	4
C E	5
E C	6
E	7
P	
&	7
N	
.....	
A	8
C C	9
D	10
G	10
C E	11
C E	13
P	
A	14
C	14
C E	15
& A	15
N C C	15
N A	16
.....	16
.....	17
P & P	
F	19
C C	20
C C	22
C	23
.....	24
.....	26
.....	27

A

N<sup>⊗</sup>

V

2000 C

24

900

C

A

E

C

C

A

C

N

C

C

C

C

N

C

2000 A

C

C

G

N

C

G

E

C



2000

A  
B  
B  
B  
B  
N  
C  
A  
A  
C  
C  
C  
C

B

N

g

g g g

C

G

C

D

2000,

C

A

G

D

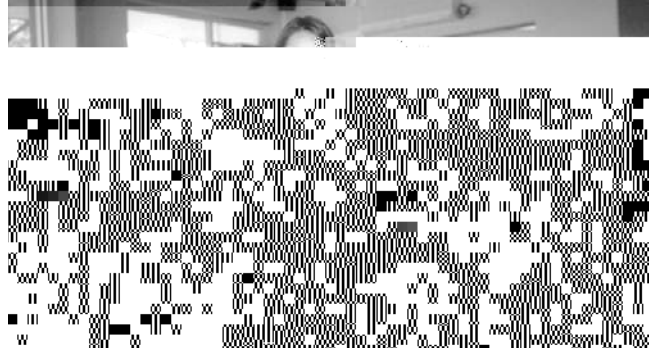
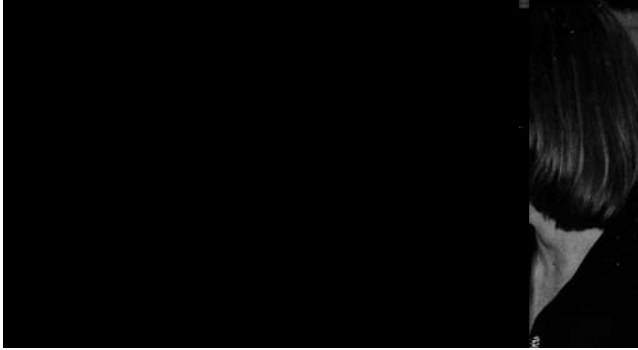
22

*Phillips v Toyota Motor Corporation Pty Ltd.*

C

C





1 2000 P

D  
E D  
B F  
G

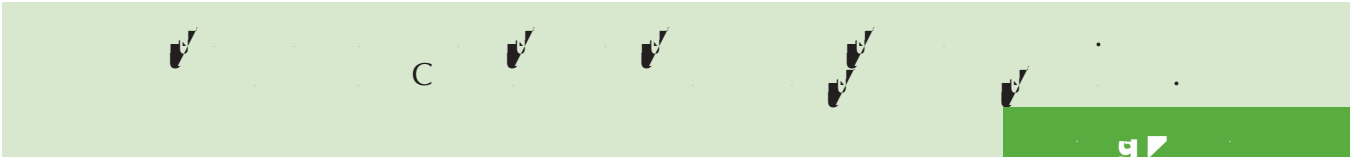
2 2000 P

A B  
D D'A  
E  
C

2000/01 P

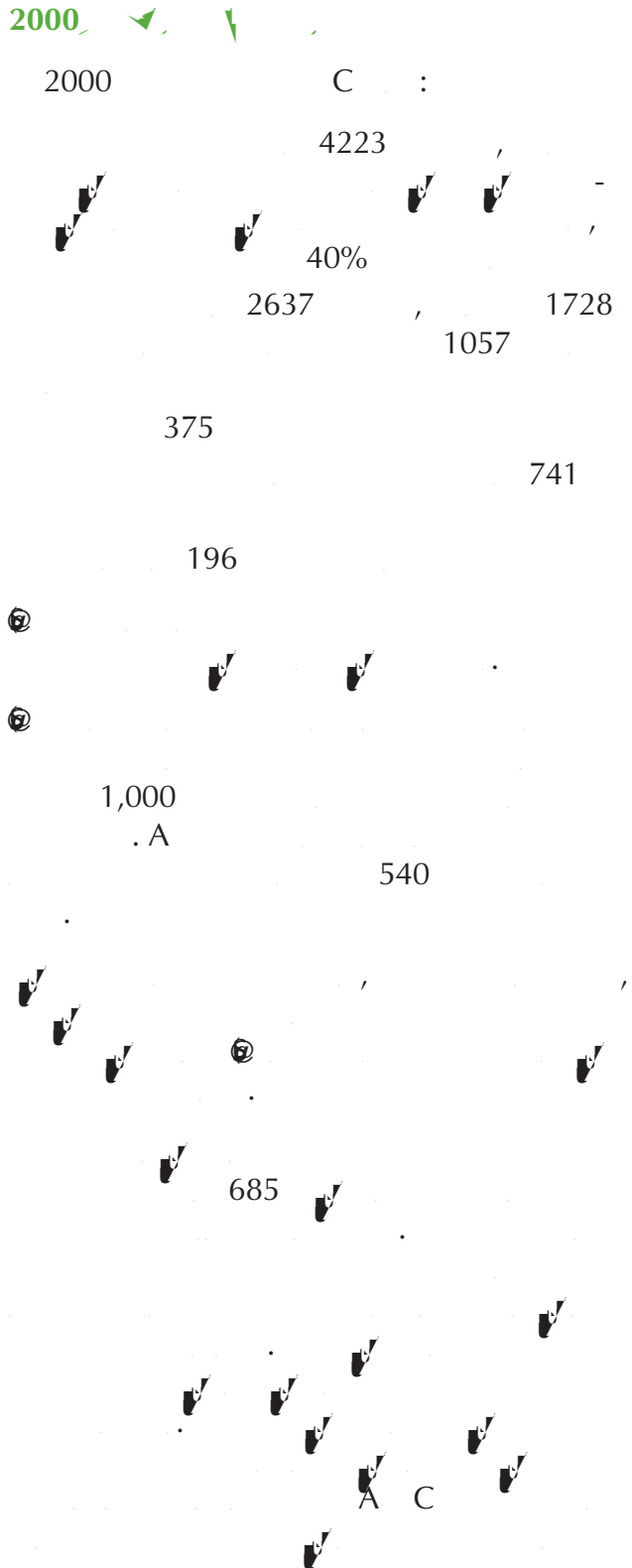
A  
G A  
C  
E  
B  
C  
F

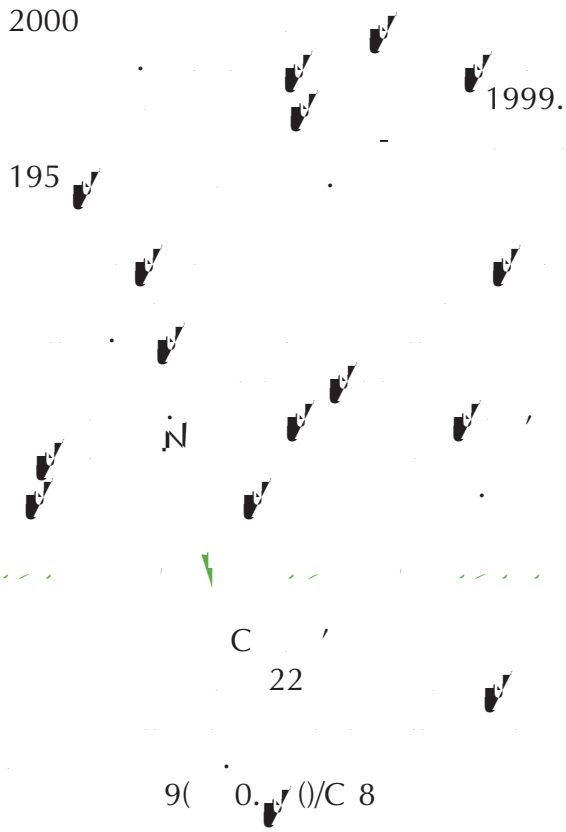
g  
g g g  
C  
A  
A  
A  
E  
A  
A  
C  
A  
C  
C  
C  
A  
E  
C  
B  
7-9 D  
2000.  
2000 F  
G  
A



g' m m

g









1999

N

A

C

2000

A

B

B

B

B

C

C

C

C

C

2001

22

C

*Our Client's Case*

1990. A

B 11 . B

A

B'

A

B'

( )

( )

B

A

B

B'

D

104 ( ) . A

*When Smiles Replace Tears*

B

A

N

11

12

A



A



b

u u u

7 b



101

18

104

C (1997)

104

B

2

E

E

B'

B

D

B

2000,  
1997.

*Preparing for the Hearing*

G

E

G

B'

D

A

28

*Postscript*

B

11

*Before the Tribunal*

A

G

F

N



C  
 ( )  
 C'  
 E  
 A  
 C  
 N

E :  
 A B :  
 F A :  
 ;  
 C F G  
 NA  
 C  
 AA F  
 N  
 C ;  
 C C' N C G  
 G  
 E :  
 Williams  
 C' N ( ) 54 :





E  
D : F G  
A F

A 2000, N A G F  
 B D A A  
 A A A  
 C C  
 C  
 A C  
 A C  
 A D A D F A  
 A C  
 F A  
 G 24 /  
 7 /  
 F A  
 F A  
 .35  
 ( C)





C  
David Coorey outlines his experience at Kingsford Legal Centre:

F C 2001.  
A C 2000.

N

C

A

A

A

A

A

A

A

A

A

A

A

(

C

C

C

C

C

A

(

) 0-1.2083 D-0.033

A

A

A

A

A

A





PP

D, 2000 C

D, NB D G

F

Ⓢ

F

E

:

D, C

N D

C D

Ⓢ

A

B D G & , C

C

PP

C

C

2000

Ⓢ

2000

N C , C -C , C, D

A



97

9

A



A



C



C



C



C



C



C



C



C



C



C





F  
 C  
 N  
 11995,  
 C  
 F  
*Clinical Legal Experience*  
*clinical legal education component*  
*Law, Lawyers and Society*

C  
 C.  
 B  
 1984.  
 C  
 1999.  
 C.  
 C.  
 C.

A  
 1995  
*Experience*  
 C  
 C  
 A  
 D  
 C  
 Clinical Legal

P  
 C  
 N  
 7-0 3 1

C  
 1996.  
 A  
 C  
 C

1996,  
 C  
 C  
 N  
 C

2000, 4,22



F	685
C	509
C	1842
D	196
E	991

422

F	428
	102
F	326

C	302
	8

F 1 .0834 -1.2 509

102

102

C F 1 .0834 -1.2 509

102





C  
2000

: ' .

C A G ' D

A C N

C C

F

C

C A C

N



C

